



OAK GROVE  
R-VI SCHOOL  
DISTRICT

hollis architects  
miller

we design the future

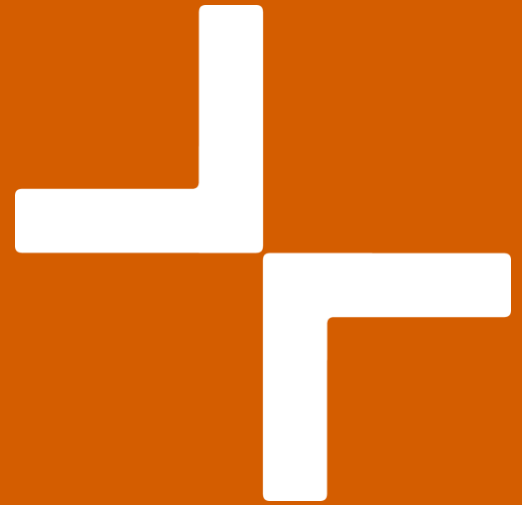
# Design Development Meeting #5

Follow Up

07.20.2020



# Reception Materials







**Reception Area** Option A







**SINGLE CARPET TILE – 25CM X 1M**  
**INTERFACE | PATTERN: DRIFTWOOD | COLOR: ASPEN**



**LAMINATE A**



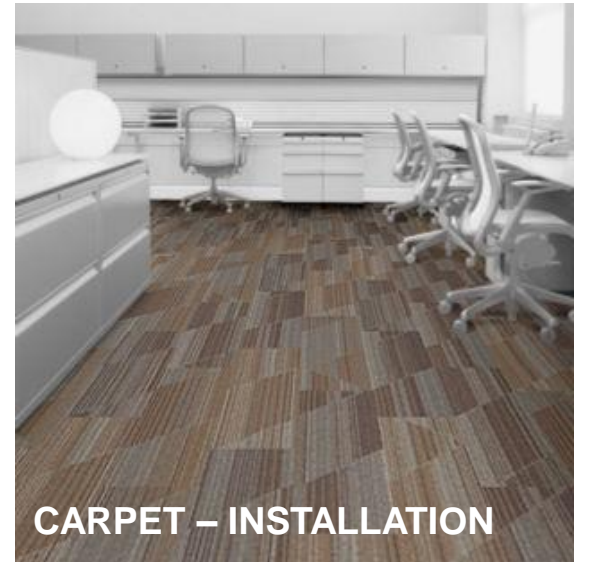
**LAMINATE B**



**LAMINATE C**



**CARPET – INSTALL PATTERN**



**CARPET – INSTALLATION**

# Reception Area Option A Materials

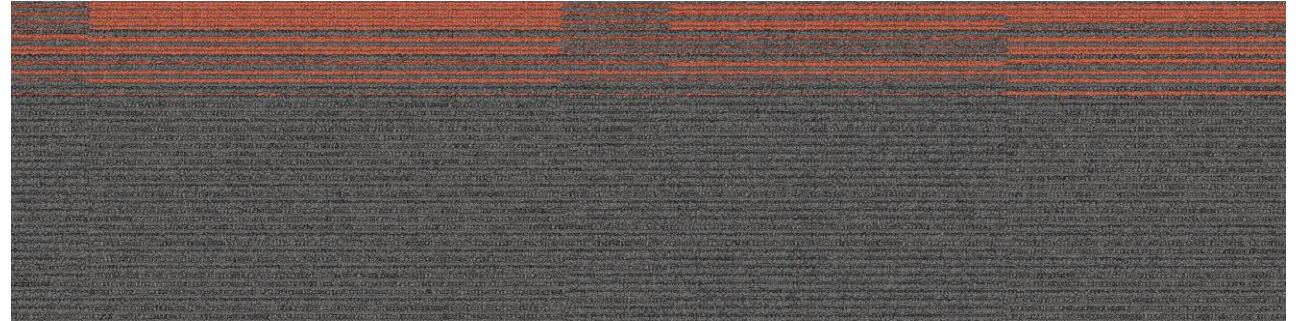




**Reception Area** Option B





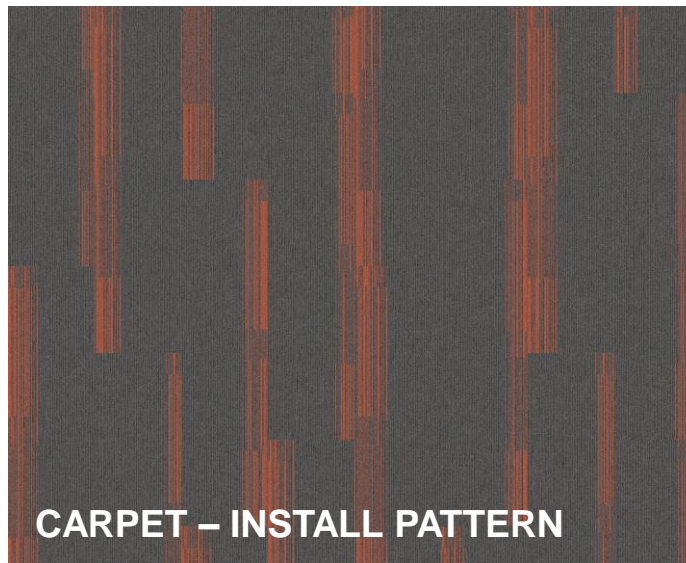


**SINGLE CARPET TILE – 25CM X 1M**

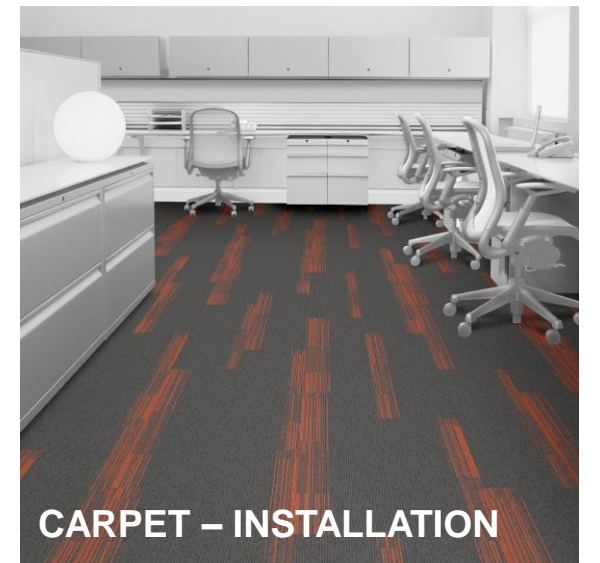
**INTERFACE | PATTERN: OFF LINE | COLOR: PEWTER/MANDARIN**



**LAMINATE FINISH - WALL**



**CARPET – INSTALL PATTERN**



**CARPET – INSTALLATION**

# Reception Area Option B Materials



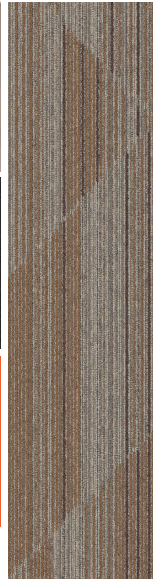




**Option A**



**Option B**



**INTERFACE  
DRIFTWOOD 104855  
ASPEN**



**INTERFACE  
OFF LINE 104335  
PEWTER/MANDARIN**

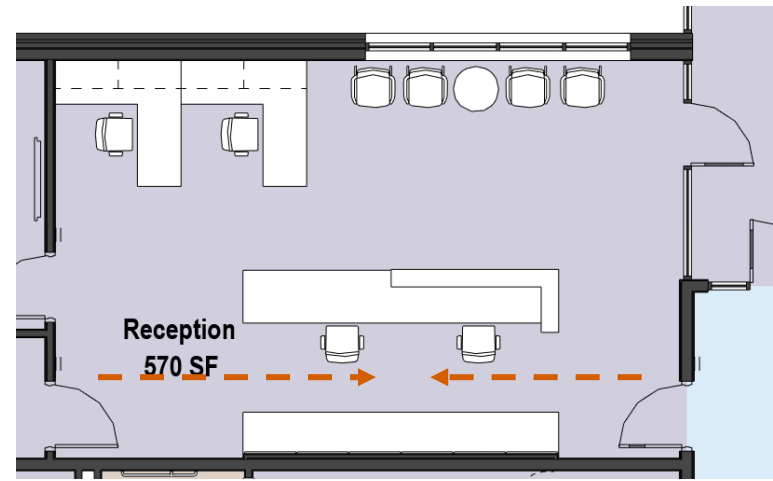
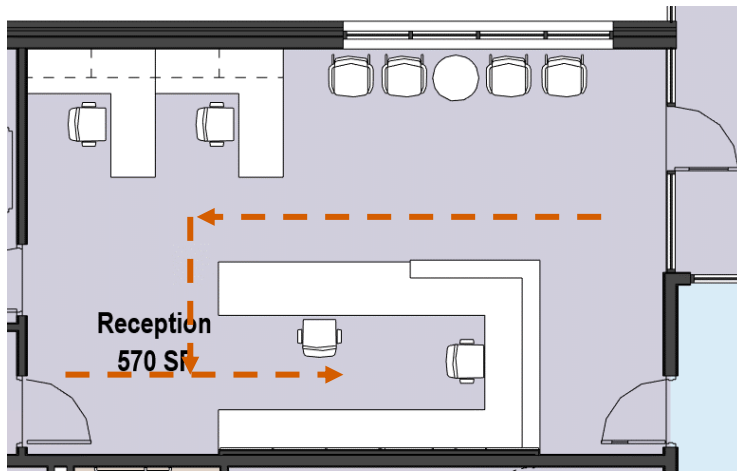
# Reception Area Comparison



Admin Office  
Reception  
**Revision**







Original

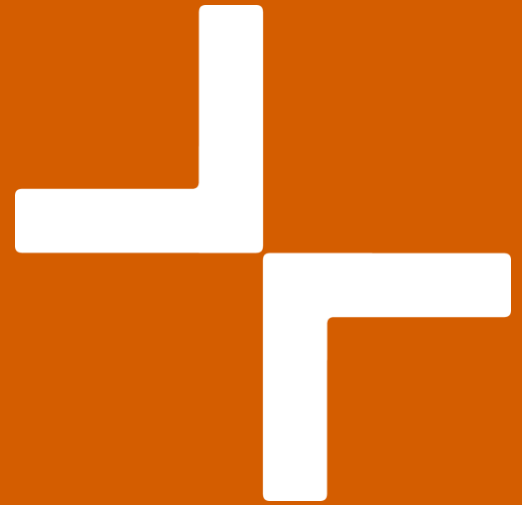


New

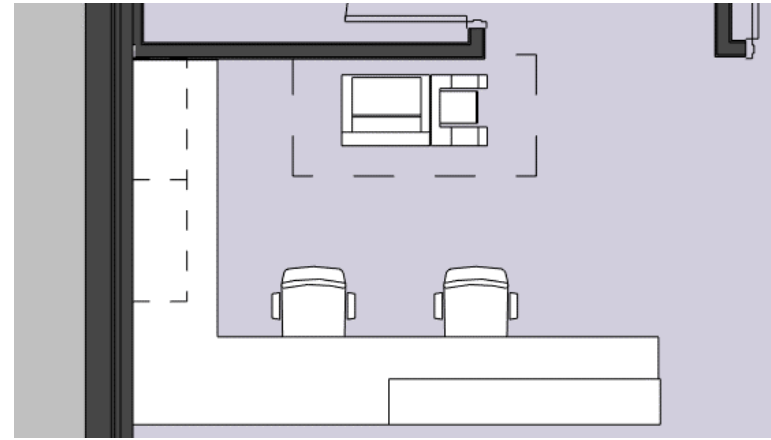
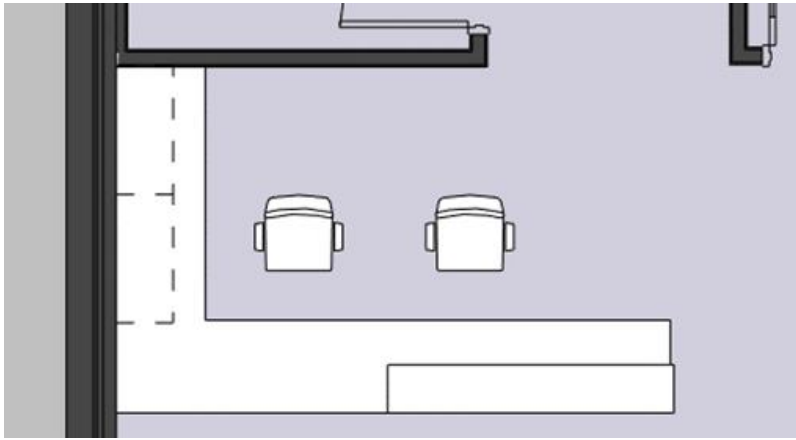
# Admin Office Reception Revision



Counseling  
Reception  
**Revision**







Original



New – Copier Added

# Counseling Reception Revision





New – Carpet A



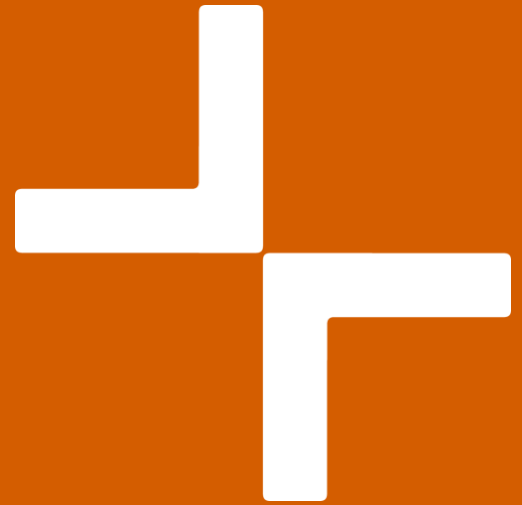
New – Carpet B

# Counseling Reception Revision

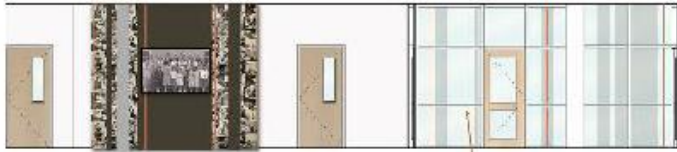




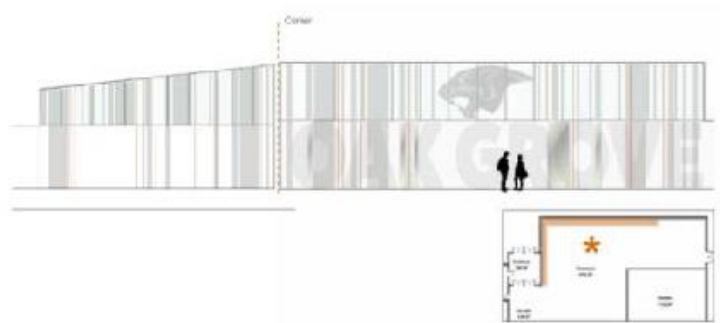
# Graphics Development



## Interior Graphics – Option A



Main Corridor Option A



Commons Option A

### School History

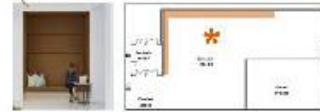
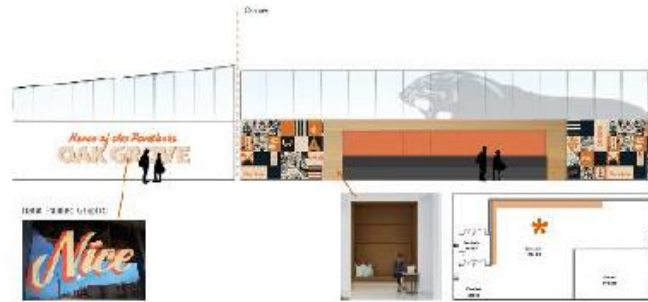
- Type of Content
  - Photos
  - Events
  - People



## Interior Graphics – Option B



Main Corridor Option B



Commons Option B

### Lenticular Wall

- One side is Panther Super Graphic
- One side is historic photos and content



# Recap Survey Results





. Out of the two options, which do you prefer?

[More Details](#)

● Option A	13
● Option B	23



### Comments

- Truly, I like a combo of A and B...the Platte County part from A and the walls of B...especially the orange wall with the OG...except I want a panther paw instead.
- How about a less expensive method. I like the history wall.
- I like option B as it appears more simplistic. Graphics are often over done and make things look cluttered. That is how I feel about option A.
- Be nice if we could mix and match.
- Wish I could have the Main Corridor and Commons A with the Lenticular wall from B.

# Recap Survey Results





# Graphics Locations





**Entrance Corridor** Logo Graphic







**Reception** Logo Behind Desk Option A





**Reception** Logo Behind Desk Option B



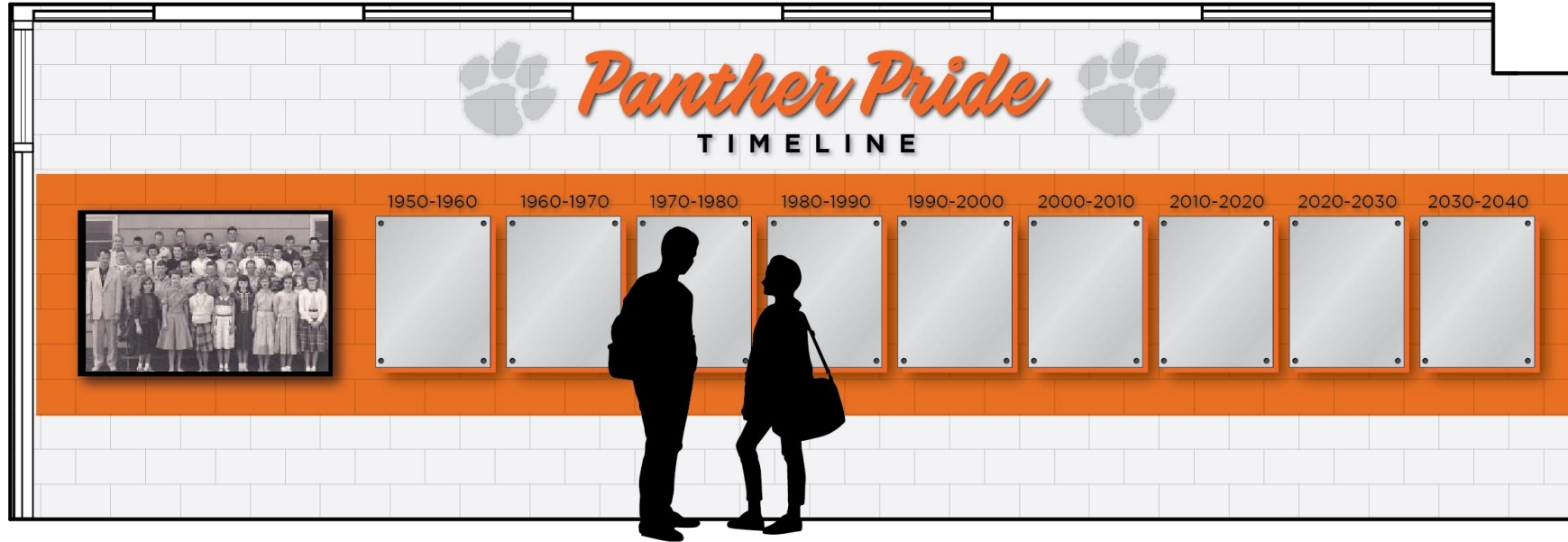




Commons Graphic







Timeline Option A





**Timeline** Option B

